

---

# Buckeye District

American Rose Society  
2008 Fall District Convention and Rose Show



Host: The Lancaster Rose Club  
September 12th - 14th • Lancaster, Ohio

---

## Convention Program



turkeys deer rabbits moles geese dogs cats snake

# The all-natural answer to outdoor pest problems...

## Liquid Fence® animal repellents.

From America's number-one selling Deer & Rabbit Repellent to guaranteed effective Mole, Snake and Goose Repellents – Liquid Fence products will do for you what they've done for millions of satisfied customers... really work.



## The Liquid Fence Company

All-Natural Animal & Insect Repellents • Speedy Grow® Plant Booster • Yard Net™ Lawn & Yard Insect Repellent

(800) 923-3623 [www.liquidfence.com](http://www.liquidfence.com)

# Table of Contents



<b>Welcome</b>	<b>4</b>
Jim Zimmerman Buckeye District Director	4
Len Pavuk Buckeye District President	4
The Show Theme	5
<b>Event Schedule</b>	<b>8</b>
Weekend Activities and Venues	8
<b>Arrangement Schedule</b>	<b>13</b>
Artistic Design Rules	13
Buckeye District Arrangement Awards	15
Section A Special Challenge Class (Standard Size)	15
Section B Traditional Arrangements Classes (Standard Sz)	15
Section C Modern Arrangements Classes (Standard Size)	16
Section D Oriental Arrangements Classes (Standard Size)	17
Section E Traditional Arrangements (Miniature Size)	17
Section F Modern Arrangements Classes (Miniature Size)	18
Section G Oriental Arrangements Classes (Miniature Size)	18
Section H Special Arrangements Class (Judges Only)	19
Section H Princess - Duchess - Duke Classes	19
Section H Novice Arrangements Class	22
Section H Junior Arrangements Class	22
Section I Dried Rose Arrangements Classes	23

Section J Dried Rose Crafts Arrangements Classes	23
Section K Table Settings Arrangements Classes	24
Section L Personal Adornments Class	25
Section M Mentoring Classes (Experienced & Novice)	25
Section N Mentoring Classes (Older and Younger)	26
Section O Special Challenge Class II “Celebrate Glass”	27
Section P Educational Purpose Class	27

## **Horticulture Schedule** **29**

Horticultural Show Rules	29
Section A Buckeye District Perpetual Awards	32
Section B Large Flower Specimens	34
Section B Eddie Edwards Challenge Class	36
Section C Miniature Rose Specimens	37
Section D Mini-Flora Rose Specimens	38
Section E Novice Class	38
Section F Mentoring Large Rose Challenge Classes	39
Section G Mentoring Small Rose Challenge Classes	40
Section H The Braggin’ Rights Trophy	41
Section I Judges Classes	41
Section J Lancaster Rose Club (restricted Classes)	42
Best Of Show	42

## **Maps And Contacts** **44**

Travel Times From Various Ohio Cities	44
Contacts	45
Lancaster Venues and Hotels	46



## **Shuttle Van Schedule** **49**



*Welcome to Lancaster and Fairfield County for the  
Buckeye District of the American Rose Society*

## ROSE SHOW

*We hope you enjoy your stay, and are able to experience all of the unique features of our community, including the many historic sites, museums, shopping and dining opportunities, and most of all the friendly people you meet during your visit! We're glad you're here, and invite you to visit us again as we celebrate our many festivals and special events!*

Bremen Oil Derrick Days – Sep. 26-28 – [www.bremenvillage.com](http://www.bremenvillage.com)

Frontier Spirit – Sep. 27-28 – [www.frontierplayers.org](http://www.frontierplayers.org)

Fairfield County Fair – Oct. 5-11 – [www.fairfieldcountyfair.com](http://www.fairfieldcountyfair.com)

Pumpkin Hike – Oct. 18 – [www.lancasterparks.com](http://www.lancasterparks.com)

Cemetery Walk – Oct. 24 – [www.fairfieldheritage.org](http://www.fairfieldheritage.org)

Christmas Holiday Parade – Nov. 22

Heritage Candlelight Tour – Dec. 13 – [www.fairfieldheritage.org](http://www.fairfieldheritage.org)

Old Tyme Village Christmas – Dec. 20 – [www.bremenvillage.com](http://www.bremenvillage.com)

*For a complete Calendar of Events, call (800) 626-1296 or visit us at:*

[www.visitfairfieldcounty.org](http://www.visitfairfieldcounty.org)

---

# Welcome

The Lancaster Rose Club welcomes you to “Celebrate Glass”



---

## JIM ZIMMERMAN BUCKEYE DISTRICT DIRECTOR

Welcome to the 2008 installment of our Fall Convention and Rose Show. We have introduced several new and exciting things for this year's event.

Four mentoring classes have been added to the arrangement and horticultural sections of the rose show schedule that will allow the less experienced exhibitor to join with a more experienced person and enter as a team. Select your teammate.



*Jim*

Several vans will revolve continuously between the attractions to transport everyone at their leisure. Visits to the beautiful rose gardens of Dave Ackers, Tim Hartranft and Steve Campbell will include on-site programs on growing, exhibiting and garden design. A box lunch is included in the registration.

Eddie Edwards, the noted hybridizer of many quality hybrid tea exhibition roses will be the featured dinner speaker and will also present a program at one of the gardens on tour. Some of Eddie's introductions include Mavrik, Cajun Moon, Cajun Sunrise, Marilyn Wellan and many more.

The “Great Carnak” will return for our banquet. Dr. John “Carnak” Dickman will delight everyone with a hilarious program that answers (or asks) questions on rose culture.

This is truly a district event that has seen participation in some form from every local society. Working together and sharing ideas is helping us to establish a format to make it easier for clubs to host this event in the future. LEARN, SHARE AND HAVE FUN.

---

## LEN PAVUK BUCKEYE DISTRICT PRESIDENT

*To All Rose Show Participants:*

*I want to welcome you to a great experience at the BUCKEYE DISTRICT ROSE SHOW AND CONFERENCE being held in the great historical location of Lancaster Ohio.*

*This weekend will offer you a full schedule of activities and a rose show second to none.*

*There will be activities scheduled throughout the weekend and I urge you to take full advantage of them.*

*It will be a time to gather knowledge, make friends and experience the great world of roses, so have fun and have a wonderful time.*

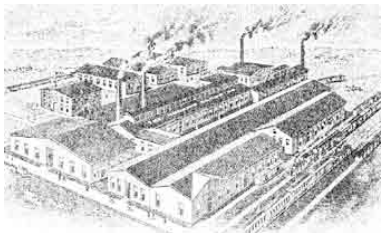


*Len*

## THE SHOW THEME

### The Theme of this year's show

by: Steve Campbell



The first house I remember as a child stood under the shadow of a huge steel vice shaped factory that belched fire out it's roof every night. I played in piles of spilled white sand by the railroad track after school. I went to sleep hearing the serenade of high pitched compressors competing with the roar of blasting natural gas as it ignites to melt sand, flint, and soda ash into glass.

Lancaster has been a glass manufacturing town from it's childhood. Anchor Glass, Hocking Glass, Lancaster Lens, Highland Manufacturing and numerous other companies put this town southeast of Columbus on the map. During my youth it was said we turned out more glass tableware than any other city in the world. This town invented the words "Fire-King", "Peach Luster", "Milk Glass", "Royal Ruby Glass" and "Depression Glass". The glass intensifier lenses in the Statue of Liberty's torch were made here in Lancaster along with the first corrective optical lenses in the nation.

This year, the Buckeye District of the ARS will take a weekend in September to "Celebrate Glass". The theme of the 2008 Fall District

Convention and Rose Show was announced by the Lancaster Rose Club in January. It recognizes the timeless marriage between the Rose and the beautiful glass crystal container that serves as the strong stately stage on which she performs.



Exhibitors this year will be competing for the "Best of Show" award. We are calling it "The Rose Bowl".

**Featured Speaker.** Eddie Edwards, hybridizer of Pop Warner and many other competition roses has agreed to be our featured speaker. Having Mr. Edwards come to Lancaster is made even more special because of Tim Hartranft's win at the 2007 Fall ARS National rose show.



Tim, a member of the Lancaster Rose Club, won Hybrid Tea Queen with Pop Warner. It will be great fun to watch Tim show Mr. Edwards around his garden.

## Lancaster's Attractions

We look forward to sharing our history with you at the convention including visits to the Ohio Glass Museum and historic tours of The Sherman House, The Ohio Decorative Arts Center and The Georgian.

## Mentoring Classes

This year we are trying to encourage more exhibitor participation.

In recent years as rose growers age exhibitor participation has declined. To help encourage us to begin passing our skills on to others, we have established several classes that require an experienced exhibitor to join with an inexperienced grower to submit an entry.

In an effort to encourage more people to compete we have defined the "Novice" class to include anyone who has not won a trophy **at the district level** of competition.

Junior Class Exhibitor Registration is Free.

## Thanks To Our Co-Sponsors

We also thank other local societies in the Buckeye District who worked with Lancaster Rose Club members to co-sponsor this event and make it a success.

**Our Appreciation goes out to each of our Donors, from the largest to the smallest. They made this event a reality. And to each exhibitor and participant. Thank You**



**PROGRAM PRODUCTION BY SE CAMPBELL  
PRINTING BY BRUCE DELONG**

## Our Team: (alphabetical order)

Dave Ackers - Horticulture Show Chairman  
Susie Ackers - Horticulture Trophies  
Gary Barlow - Arrangement Show Chairman  
Bob Barnes - Event Staff Member  
Leanna Barnes - Embroidery Gift Bags & favors  
Felicia Bates - Event Staff Member  
Brian Burley - Banquet Raffles  
Steve Campbell - Event Coordinator  
Lynn Campbell - Event Administrative Assistant  
Bruce Delong - Horticulture Schedule, Printing  
Dr. John Dickman - Entertainment  
Susan Dolph - GCRA Sponsor  
Richard Fisher - Driver  
Bud Frick - Miami Valley Sponsor  
Diane Gallagher - Mailing Lists  
Dan Gallagher - Show SetUp  
Chris Gookin - Driver  
Melissa Hartranft - Event Staff Member  
Tim Hartranft - Featured Speaker Host  
Sue Heffner - Registration/Vase Preparation  
Jim Hering - Supervisory Guidance  
Laura Herr - Raffle Basket  
Cheryl Menard - Banquet Program  
Denise Mitchell - Event Staff Member  
Mike Mitchell - Marketing/Financial  
Denise Mraz - Proofreader  
Len Pavuk - Event Treasurer & CORS Sponsor  
Monica Valentovic- Spray Technical Review  
Carol Rutter - Gift Bag Chairman  
Larry Schock- Clerk Chairman  
Lew Shupe - Arrangement Schedule & Trophies  
Anita Solarz- District Perpetual Trophies  
Caryl Woods - Hospitality & Box Lunch  
Jack Woods - Driver  
Tom Woods - Driver  
Ned Young - Display Donation  
Barbara Zimmerman - Raffle Basket  
Jim Zimmerman - Supervisory Guidance

**"Celebrate Glass"**

**"The constant companion to our roses"**

# Leslie "Les" Duffey

**A FRIEND WHO "LIVED GIVING"  
AND GAVE MEANING TO THE WORD "MENTOR"  
YOU ARE MISSED**



1916 - 2008



The Lancaster Rose Club is pleased to present a special trophy this year in memory of Les. In his honor, we have dedicated the 2008 Buckeye District Fall Rose Show's horticulture hybrid tea "Queen of Show" to Les Duffey. Thanks for everything.

## **2008 FALL BUCKEYE DISTRICT TROPHY DONORS**

Carl & Sue Witwer

Caryl & Jack Woods

David & Lois Ackers

Dr. Gary Rankin & Dr. Monica Valentovic

Gary Barlow

Jim & Barbara Zimmerman

R. Kenneth Kerr III

(In honor of Charlotte Kerr)

Lancaster Rose Club

Lew Shupe

Louise Duffey

Miami Valley Rose Society

# Charlotte Sieber Kerr

1899-1974

**OF "ROSEBANK" ON LANCASTER'S WEST SIDE  
A CHARTER MEMBER OF THE LANCASTER ROSE CLUB**

*A community leader from 1936, she also was a charter member of the Lancaster Hospital Twig Two, Parents League and Fairfield Heritage Association and a member of the Ohioan, Anna Library Association, St. Mary's Church, St Mary's Rosary Alter Society, The Lancaster Country Club, and American Legion Auxiliary.*



**Annually, The Kerr Family honors her memory by sponsoring a court trophy (Queen or Princess) at the Lancaster Rose Club Show**

R. Kenneth Kerr, Jr family - Athens Ohio,  
The John E.M. Kerr family - Athens, Ohio,  
The Katharine Kerr Lake family - St. Petersburg, Florida,  
Kerr Distributing Company, Inc and  
Crystal Geyser Alpine Springs Water

# Event Schedule

September 12th - 14th



## WEEKEND ACTIVITIES AND VENUES

### Schedule of Events

*Welcome To Lancaster's 4 participating hotels*



Shaw's Inn

Baymont Inn

Hampton Inn

Holiday Inn Express

### FRIDAY 09/12/08

6:30 PM - 10:00 PM Hospitality Reception at "Park Place"  
("On Call" shuttle van service from above hotels 740-215-6348)



Park Place



Fairfield County Fairgrounds



Mt. Pleasant

**SATURDAY Daytime 09/13/2008**

**COMPETITION  
AT THE LIBERTY CENTER**

6:30 AM - 11:00 AM Registration

6.30 AM - 11:00 AM Show Entries

6.30 AM - 11:30 AM Mentoring  
Entries

*11:00 AM - 1:00 PM Judging*

11:30 AM - 4:00 PM Educational  
Programs will be held in the home  
gardens. Shuttle van service and a  
picnic lunch is provided



~ OPEN TO THE PUBLIC ~

*1:30 PM - 4:30 PM Rose Show Open to Public (including following sessions)*

*2:30 PM - 3:00 PM Rose Show Rose Judging Demonstration*

*3:30 PM - 4:00 PM Rose Show Arrangements Walk-through with Gary & Lew*

*4:00 PM - 5:00 PM Trophy Presentation*



**~ Other Saturday Daytime Events ~**  
**(Tours are serviced by shuttle vans every 15 minutes)**

Learning Sessions will be held at home gardens  
Picnic Lunch (For details see next page)

11:30 AM - 1:00 PM Learning Session 1 and Tours  
(Text messages of winners to shuttles)

*1:00 PM - 2:15PM Judges Lunch at Henry Manor*

1:30 PM - 3:45 PM Learning Session 2 and Tours

**SATURDAY Daytime 09/13/2008**

**HOME GARDEN SESSIONS & HISTORICAL TOURS**  
**11:30 AM -& 1:30 PM**  
 Shuttle service will run continuous 15 minute service to and from each garden, Ohio Glass Museum and the Liberty Center

*Dave & Susie Ackers*  
 (1:30 PM Session 2 Only)  
 Ya Gotta Grow'em to Show'em



5 minutes

*Text message reports of winners to shuttles in the morning*

5 minutes



*Tim & Missy Hartranft*  
 (Winner ARS HT Queen 2007) in the garden with Eddie Edwards Both Sessions

5 minutes



*Steve & Lynn Campbell*  
 (11:30 AM Session 1 Only) Garden Style, Form and Function

5 minutes



5 minutes

**HISTORICAL WALKING TOUR**



*Sherman House*



*Ohio Decorative Arts Center*



*The Georgian*

*Ohio Glass Museum (including a 15 minute video of Lancaster's glass history)*  
 Neighborhood restaurants - Four Reasons, Shaw's Inn, Tiberio's, WG Grinders

**SATURDAY Evening 09/13/2008**

**2008 FALL DISTRICT BANQUET AND AWARDS PRESENTATION  
(Shuttle service to the Elks Ballroom from participating hotels)**

6:30 PM - 7:00 PM Social Hour  
(cash bar)

7:00 PM - 9:30 PM Banquet

*Featured Speaker*

*Eddie Edwards, Hybridizer*

*District Awards Presentation*

9:30 PM - 10:30 PM Nightcap  
(cash bar)

10:30 PM - 12:30 AM OSU vs USC Replay *Park Place* (“On Call” shuttle service)



**SUNDAY Morning 09/14/2008**

**CONTINENTAL BREAKFAST**

7:45 AM - 9:00 AM Ohio Glass Museum (“On Call” shuttle service from hotels)

For Shuttle Van Service Call (740) 215-6348

**DISTRICT MEETINGS**

8:30 AM - 9:30 AM Executive  
Board Meeting

9:30 AM - 11:00 AM Buckeye  
District Business Meeting

(All members of local societies in the Buckeye  
District are invited to attend)



Lancaster’s Historic museums are open from 1:00PM - 4:00PM



*The*  
**Central Ohio**  
**Academy of**  
*Dance*

Stephanie Recchi

437 N. Broad Street Lancaster 740-654-1800



**THANKS TO OUR PATRONS**

**FIRST BREMAN BANK - LANCASTER, OH**

**DR. JOHN & SUE DICKMAN - COLUMBUS, OH**

**LANCASTER FIRE DEPT - LANCASTER, OH**

**LEN & JEANNETTE PAVUK - BLACKLICK, OH**

**MEMAC INDUSTRIES INC - LANCASTER, OH**

**N8 CHIROPRACTIC - LANCASTER, OH**

---

# Arrangement Schedule

Lewis Shupe and Gary Barlow

## ARTISTIC DESIGN RULES

---



1. Arrangements are open to anyone except Class 20 (For Judges Only), Class 26 (Novice) and Class 27 (Juniors [no fee registration]). On Saturday, September 13, 2008, designs may be placed between 6:30 a.m. and 11:00 a.m. **All Mentoring Classes** may be placed between 6:30 a.m. and 11:30 a.m. (See access restrictions in Horticultural Rules) Designs may not be removed until the close of the show. All exhibitors must be registered for the convention. All exhibits must be the sole work of the exhibitor and no other person may assemble or alter an exhibitor's entry. (Please note that Classes 35-38 are for teams of exhibitors). All designs must have been created for this show; designs entered in a previous show are not to be entered here.
2. The container should have exhibitor's name concealed on the bottom of the container. Care will be taken for the protection of the exhibit, but the Buckeye District, Lancaster Rose Club or The Liberty Center will not be responsible for loss or damage to the exhibit.
3. Exhibitors may place their entries under the supervision of the Arrangement Chair, but must not touch or move other arrangements. The Chairperson may move an arrangement if necessary to make room for other designs. Standard size arrangements will be placed in a niche space approximately 40" tall x 24" wide (with 12" wings) and a table depth of approximately 30". Arrangers should be somewhat flexible with these dimensions and plan their arrangement accordingly. All table coverings are neutral colored. Note specific size restrictions in the various class descriptions, (especially miniature and mini-flora classes). Miniature arrangements will be judged at eye level.
4. Arrangers may provide their own free-standing backdrops if desired. These backdrops may be set up on Friday evening from 8:00 – 10:00 p.m.
5. Roses must be the dominant flower in all arrangements. Other flowers and plant materials are permitted unless the class specifies otherwise. Accessories and bases may be included if they are an integral part of the design. In some classes accessories are not permitted, and are so noted in the schedule.

6. Painted or artificially colored fresh plant material, artificial flowers and foliage, live creatures, or the flag of any country are not permitted. Painted or dried materials may be used in Modern designs unless otherwise noted. The use of plant materials on the state or local conservation lists is not permitted.

7. Roses must be correctly named on the entry tag. Type of design must be listed on the entry tag where noted. Entry tags must be placed beside the exhibit, but not under it. A 3" x 5" card may be placed by the entry if an interpretive description is needed.

8. All roses must be outdoor grown, but not necessarily by the exhibitor. However, to be eligible for the ARS Gold, Silver and Bronze Certificates the roses must have been arranger grown and marked "AG" on the entry tag. These Certificates are to be awarded to the highest scoring arrangements and chosen from all of the first place winners that have scored 92 points or higher. Some entries, as noted in the schedule, are not eligible for these medal certificates.

9. Reservations are required for Classes 32 and 33 (Standard Size and Miniature Size Table Settings). Reserve space for these classes by Saturday, September 6, 2008, by calling Lew Shupe (Tel: 937.478.4602) or writing: 1343 Sunset Drive, Fairborn, Ohio 45324-5649, or by e-mail: [lewis.shupe@wright.edu](mailto:lewis.shupe@wright.edu). Other reservations are not required, but in order to provide for adequate exhibit space, your intent to exhibit in specific classes would be appreciated.

10. The decision of the Judges is final. Judging will be done according to the *ARS Guidelines for Judging Rose Arrangements* using the revised score card:

<u>Criteria</u>	<u>Points</u>
Conformance	15
Principles of Design	30
Perfection of the Rose(s)	30
Creativity and Expressiveness	15
Distinction	<u>10</u>
Total:	100

11. A design must score at least 90 points to be eligible for a first place ribbon and keeper trophy. Only one first, second, third and honorable mention ribbon may be awarded in each class. In addition to the class and best-of-section awards listed in the schedule, the following may be awarded:

- One set of ARS Gold, Silver and Bronze Medal Certificates (92 points or above, using fresh AG roses) for both Standard and Miniature size designs.

## BUCKEYE DISTRICT ARRANGEMENT AWARDS

---

- **Martha and Irwin Jones Award (Standard Traditional Design)**
- **Consulting Rosarian Arrangement Trophy (Standard Modern Design)**
- **District Director's Trophy (Standard Oriental Design)**
- **Marge and Pete Zimmerman Trophy (Miniature Traditional Design)**
- **District Miniature Modern Design Trophy**
- **District Miniature Oriental Design Trophy**
- **Robert A. Hatterschide Trophy (Overall Excellence in Design)**

## SECTION A SPECIAL CHALLENGE CLASS (STANDARD SIZE)

---

### **Special Challenge Class I (Section A)**

Eligible for the ARS Gold, Silver and Bronze Certificate and Local Trophy

- Cl. 1      ***“The Ohio Glass Museum”***  
This class honors the Ohio Glass Museum in Lancaster, Ohio.  
Arranger's choice of design; type of design must be written on entry tag.  
A glass container must be used in the design.

## SECTION B TRADITIONAL ARRANGEMENTS CLASSES (STANDARD SZ)

---

### **Traditional (Section B)**

Eligible for the ARS Royalty Award, ARS Gold, Silver and Bronze Certificate  
and Local Trophy

- Cl. 2      ***“The War of the Roses”***  
To honor the name of Lancaster . . .

A line or line-mass design using any red and white roses (blends may also be used).

- Cl. 3            ***“Stained Glass Windows”***  
France’s Chartres Cathedral has 179 magnificent stained glass windows of blazing reds, blues, oranges, yellows, purples and many other colors.
- A mass arrangement.

## SECTION C MODERN ARRANGEMENTS CLASSES (STANDARD SIZE)

---

Eligible for the ARS Artist’s Award, ARS Gold, Silver and Bronze Certificate  
And Local Trophy

- Cl. 4            ***“Lancaster Lens . . . “***  
created the glass magnifier lens that was built into the compass of the *Spirit of St. Louis* airplane, and used by Charles Lindberg in the first flight across the Atlantic in 1927.
- A free-form design emphasizing vertical or slanting or horizontal rhythmic line with plant materials used in a naturalistic way.
- Cl. 5            ***“Glass Blowing”***  
From 27 BC – AD 14 Syrian craftsmen used long, thin metal tubes for blowing glass and making objects.
- A tubular design using cylindrical forms as the primary structure.
- Cl. 6            ***“Through A Glass Darkly”***  
Relate to this famous line and metaphor from the Bible and literature.
- An underwater design.
- Cl. 7            ***“Think Chihuly – Think Glass”***  
Honoring a famous American glass artist.
- Arranger’s choice of any other type of modern design. Type of design must be written on the entry tag.

## SECTION D ORIENTAL ARRANGEMENTS CLASSES (STANDARD SIZE)

---

Eligible for the ARS Oriental Award,  
ARS Gold, Silver and Bronze Certificate and Local Trophy

- Cl. 8      ***“Treasures from the Sea”***  
In earlier days, Japanese glass fishing floats were used by fishermen to keep their nets afloat.
- A design in a low container with water as an important part of the design. Stones or marbles may be used in the design. Arranger’s choice of type of design must be written on entry tag.
- Cl. 9      ***“Japanese Lanterns of Light”***  
Oriental lanterns sway from long poles and offer light in the darkness.
- A design in a tall container. Arranger’s choice of type of design must be written on entry tag.
- Cl. 10     ***“Glass Dancer”***  
Honoring Katsumi Shibata, respected glass artist from Tokyo.
- An Oriental free style design emphasizing rhythm and space, using one or more containers. Arranger’s choice of type of design must be written on entry tag.

## SECTION E TRADITIONAL ARRANGEMENTS (MINIATURE SIZE)

---

Eligible for the ARS Miniature Royalty Award,  
ARS Miniature Gold, Silver and Bronze Certificate And Local Trophy

- Cl. 11     ***“Ruby Glass”***  
A line or line-mass arrangement using red in the design. No more than 10” in height, width or depth.
- Cl. 12     ***“The Goblet of Fire”***  
A popular adventure in the Harry Potter series.
- A mass arrangement using three or more colors of roses, and no more than 8” in height, width or depth.

## SECTION F MODERN ARRANGEMENTS CLASSES (MINIATURE SIZE)

---

Eligible for the ARS Miniature Artist's Award,  
ARS Miniature Gold, Silver and Bronze Certificate and Local Trophy

- Cl. 13      ***“Once in a Blue Moon”***  
This class honors depression glass, popular in the early-to-mid 1900's.  
  
A free-style arrangement using the color blue somewhere in the design.  
No more than 6” in height, width or depth.
- Cl. 14      ***“BLT . . . and hold the mayo!”***  
Sandwich glass was a popular glass pattern produced by Anchor Hocking  
from 1939-1964.  
  
An abstract design with at least two abstracted qualities. No more than  
10” in height, width or depth.
- Cl. 15      ***“Mirror, Mirror on the Wall”***  
A reflective arrangement. No more than 8” in height, width or depth.
- Cl. 16      ***“The Glass Menagerie”***  
Any other modern design of arranger's choice. Type of design must be  
written on entry tag. No more than 10” in height, width or depth.

## SECTION G ORIENTAL ARRANGEMENTS CLASSES (MINIATURE SIZE)

---

Eligible for the ARS Miniature Oriental Award,  
ARS Miniature Gold, Silver and Bronze Certificate and Local Trophy

- Cl. 17      ***“With Water Smooth As Glass”***  
Glass and water have many common qualities.  
  
A design in a low container with water as an important part of the design.  
Arranger's choice of type of design must be written on entry tag.  
No more than 8” in height, width or depth.
- Cl. 18      ***“Carnival Glass”***  
Iridescent pressed glass in many colors, first produced by the Fenton Art  
Glass Company, founded in Martins Ferry, Ohio in 1905.

A design in a tall container. Arranger's choice of type of design must be written on entry tag. No more than 10" in height, width or depth.

Cl. 19      ***"Beads"***

The earliest glass objects may have been beads of many colors, circa 3500 BC.

An Oriental free-style design, utilizing various colors in the design. No more than 10" in height, width or depth.

## SECTION H SPECIAL ARRANGEMENTS CLASS (JUDGES ONLY)

---

Eligible for ARS Judge's Arrangement Certificate and Local Trophy

Cl. 20      ***"Anchor's Aweigh"***

Composed in 1906, a song of the U.S. Navy. In the previous year, 1905, a glass company began on the banks of Ohio's Hocking River. It merged with Anchor Cap and Closure to become Anchor Hocking in 1937.

Arranger's choice: (1) a standard size design, or (2) a miniature design not to exceed 10" in height, width or depth. Type of design must be written on entry tag.

## SECTION H PRINCESS - DUCHESS - DUKE CLASSES

---

### **Standard Size Princess of Arrangements**

Eligible for ARS Princess of Arrangement Certificate, ARS Gold, Silver and Bronze Certificate and Local Trophy

Cl. 21      ***"Smooth As Satin"***

Satin Glass is a dull finish art glass from the late 19<sup>th</sup> century, and found in many colors.

A standard size design of arranger's choice using roses and rose foliage only. Rose hips may be included. No accessories. Type of design must be written on entry tag.

### **Miniature Princess of Arrangements**

Eligible for ARS Miniature Princess of Arrangement Certificate,  
ARS Miniature Gold, Silver and Bronze Certificate and Local Trophy

Cl. 22      ***“The Secret of the Sphinx”***

Clear glass was used in architecture in Alexandria, Egypt in AD 100.

A miniature size design of arranger’s choice using roses and rose foliage only. Rose hips may be included. No accessories. A clear glass container must be used. Type of design must be written on entry tag. No more than 8” in height, width or depth.

---

### **Standard Size Duchess of Arrangements**

Eligible for ARS Duchess of Arrangement Certificate,  
ARS Gold, Silver and Bronze Certificate and Local Trophy

Cl. 23      ***“Till the Cows Come Home”***

Milk glass can be traced back to the 1500’s, and became especially popular from the 1700’s on. It was intended to look like porcelain, but less expensive to produce.

A standard size design of arranger’s choice, using fresh roses and rose foliage only, with no other fresh plant material. Other required materials used must be dried and/or treated dried plant material. No accessories. A milk glass or other white container must be used in the design. Type of design must be written on the entry tag.

---

### **Miniature Duchess of Arrangements**

Eligible for ARS Miniature Duchess of Arrangement Certificate,  
ARS Miniature Gold, Silver and Bronze Certificate

Cl. 24      ***“Glass Pots”***

Found in Egypt as early as 1500 BC, these are rare finds for the archeologist today.

A miniature size design of arranger’s choice, using fresh roses and rose foliage only, with no other fresh plant material. Other required materials used must be dried and/or treated dried plant material. No accessories. Not to exceed 10” in height, width or depth. Type of design must be written on the entry tag.

**Duke of Arrangements**

Eligible for ARS Duke of Arrangement Certificate,  
ARS Standard Gold, Silver and Bronze Certificate and Local Trophy

Cl. 25 ***“Smoke and Fire”***

The first glass was made by volcanic eruptions.

A small design using any size and type of roses. Size of arrangement must be between 10” and 20” in height, width or depth. No accessories. Arranger’s choice of design must be written on the entry tag.

---



We welcome the  
Buckeye District ARS  
to Lancaster

405 N Columbus Street  
Lancaster, Ohio  
43130(740) 653-0652



Roses are a source of enjoyment and a source of comfort

## SECTION H NOVICE ARRANGEMENTS CLASS

---

Eligible for ARS Novice Certificate,  
ARS Gold, Silver and Bronze Certificate and Local Trophy

- Cl. 26      ***“Mosaic Pebble Pavements”***  
In the Ancient World in the 8<sup>th</sup> Century BC, pebble pavements were built in a mosaic-like fashion. This might be called the beginning of mosaic art. For exhibitors who have never won a first place ribbon or trophy in an ARS show. Any type of design may be entered in either standard size or miniature size arrangement. (If miniature, the design must be no larger than 10” in height, width or depth). Type of design must be written on entry tag. Accessories are permitted but must be an integral part of the design.

## SECTION H JUNIOR ARRANGEMENTS CLASS

---

Eligible for ARS Junior Certificate.  
ARS Gold, Silver and Bronze Certificate and Local Trophy

- Cl. 27      ***“Spyglass”***  
About 400 years ago Galileo turned a 20-power spyglass on the heavens. For exhibitors who are age 17 or younger. Any type of design may be entered in either standard size or miniature size arrangement. (If miniature, the design must be no larger than 10” in height, width or depth). Type of design must be written on entry tag. Accessories are permitted but must be an integral part of the design.

### *Thanks to our Arrangements Judges*

Bill Carlson – Pendleton, Indiana  
Rose Enders – Jenison, Michigan  
Peg Newill – Miamisburg, Ohio  
Carol Robertson – Foley, Alabama  
Pat Sommer – Cleveland, Ohio  
Donna Tarrant – Waddy, Kentucky

## SECTION I DRIED ROSE ARRANGEMENTS CLASSES

---

Class 28: (Standard): Eligible for ARS Keepsake Award and Local Trophy

Class 29: (Miniature) Eligible for ARS Miniature Keepsake Award and Local Trophy

Cl. 28      ***“Bottle Glass”***

Libby and Owens formed a partnership in developing the Bottle Glass Blowing Machine from 1900-1925.

A standard size dried arrangement using large dried roses (ex., HT, Gr, Fl, Sh, OGR's). Exhibitor may use other dried materials with roses. Exhibitor may not use plastic or paraffin dipped roses, glitter, paint, fresh plant or floral materials, or artificial plant or floral materials. Type of design must be written on entry tag or 3" x 5" card with names of roses used. In the design.

Cl. 29      ***“The Glass Pavilion”***

Displayed at *The Toledo Museum of Art* are glass artifacts from past centuries through current times.

A miniature size dried arrangement using miniature and/or mini-flora dried roses. Exhibitor may use other dried materials with roses. Exhibitor may not use plastic or paraffin dipped roses, glitter, paint, fresh plant or floral materials, or artificial plant or floral materials. Type of design must be written on entry tag or 3" x 5" card with names of roses used. In the design. No more than 10" in height, width or depth.

## SECTION J DRIED ROSE CRAFTS ARRANGEMENTS CLASSES

---

Class 30: (Standard) Eligible for ARS Rosecraft Award and Local Trophy

Class 31: (Miniature) Eligible for ARS Miniature Rosecraft Award and Local Trophy

Cl. 30      ***“Geometric Glass Patterns”***

In the 4<sup>th</sup> Century BC Greeks used beautiful geometric patterns in their glass mosaics, and many details in the representation of people and animals.

Any craft featuring standard size dried or pressed roses. May include wreaths, hats, jewelry, door swags, wall hangings or pictures with dried

roses as a dominant factor. Other dried or treated flowers and foliage are permitted. Suitable ribbons or bows may be used if for holidays or special events. Artificial plant materials are not to be included. Crafts will be displayed on tables with a neutral-colored cover. Exhibitors must furnish tripods or other mechanism for display of exhibits if needed.

- Cl. 31      ***“The Hourglass”***  
Sands that move slowly, showing the passing of time.

Any craft featuring miniature and/or mini-flora size dried or pressed roses. May include wreaths, hats, jewelry, door swags, wall hangings or pictures with dried roses as a dominant factor. Other dried or treated flowers and foliage are permitted. Suitable ribbons or bows may be used if for holidays or special events. Artificial plant materials are not to be included. Crafts will be displayed on tables with a neutral-colored cover. Exhibitors must furnish tripods or other mechanism for display of exhibits if needed.

## SECTION K TABLE SETTINGS ARRANGEMENTS CLASSES

---

Class 32: (Standard) Eligible for ARS Court of Etiquette Award, ARS Gold, Silver and Bronze Certificate and Local Trophy

Class 33: (Miniature) Eligible for ARS Miniature Court of Etiquette Award, ARS Miniature Gold, Silver and Bronze Certificate and Local Trophy

- Cl. 32      ***“Flying Saucers”***  
Tea drinking became popular when Queen Anne (1665-1714) chose tea (in cup and saucer) over ale as her regular breakfast drink.

Standard size table setting. A semi-formal exhibition table. Dimensions are approximately 24” wide and 30” deep, set on a neutral-colored table cover. The exhibitor may supply a backdrop or underlay if desired. No flatware is allowed. Reservations are required (See Rule #9).

- Cl. 33      ***“I’m A Little Tea Pot”***  
English teapots are often just large enough for one or two tea servings.

Miniature size table setting. A semi-formal exhibition table. Dimensions are approximately 12” in height, width and depth, and is set on a neutral-colored table cover. The exhibitor may supply a backdrop or underlay if desired. No flatware is allowed. Reservations are required (See Rule #9).

## SECTION L PERSONAL ADORNMENTS CLASS

---

Eligible for ARS Personal Adornment Award and Local Trophy

Cl. 34      ***“Murano Glass”***

Beautiful color and design in the Venetian glass of the Murano Island.

A piece of costume jewelry utilizing one or more fresh roses, attached in a way that they become a part of the jewelry design. Other fresh plant or floral materials may also be used if desired, but the rose(s) must predominate. Artificial plant materials are not to be used. Exhibits will be displayed on tables with a neutral-colored covering, and will not be moved or picked up for viewing. Exhibitors are responsible for providing the mechanism for display of the exhibit if needed.

## SECTION M MENTORING CLASSES (EXPERIENCED & NOVICE)

---

Class 35: (Standard) Eligible for Local Trophy

Class 36: (Miniature) Eligible for Local Trophy

This section may be entered only by teams of two exhibitors working together: one experienced and one novice. Each team may enter only one arrangement per class in this section. Both names of the exhibitors must be on the entry tag.

Cl. 35      ***“Two for the Road”***

Is the glass half-full or half-empty?

A standard size arrangement of the exhibitors' choice. Type of design must be written on entry tag.

Cl. 36      ***“Seeing Double”***

Lancaster Lens made the first vision corrective optical glass lenses for use by optometrists in the United States.

A miniature size arrangement of the exhibitors' choice. Type of design must be written on entry tag. No larger than 10” in height, width or depth.

## SECTION N MENTORING CLASSES (OLDER AND YOUNGER)

Class 37: (Standard - Challenge ) Eligible for Local Trophy

Class 38: (Miniature - Challenge) Eligible for Local Trophy

This section may be entered only by teams of two exhibitors working together: one older and one younger person. Each team may enter only one arrangement per class in this section. Both names of the exhibitors must be on the entry tag.

Cl. 37      ***“Tiffany Glass”***

A major producer of beautiful art glass in U.S. history.

A standard size arrangement of the exhibitors’ choice. Type of design must be written on entry tag.

Cl. 38      ***“Bifocal Glasses”***

Benjamin Franklin is called the father of bifocal eyeglasses for referring to “my double spectacles.”

A miniature size arrangement of the exhibitors’ choice. Type of design must be written on entry tag. No larger than 10” in height, width or depth.

<b>C</b> <b>O</b> <b>R</b> <b>S</b>	<b>Central Ohio Rose Society</b>	 <p><b>We are happy to be a cosponsor of the 2008 Fall Buckeye District Convention and Rose Show</b></p> <p><b>Enjoy the Competition” “Renew the Friendships”</b></p>
--	--	---

**WE WISH TO THANK  
THE GREATER CINCINNATI ROSE SOCIETY  
FOR BEING A PATRON SPONSOR**

## SECTION O SPECIAL CHALLENGE CLASS II “CELEBRATE GLASS”

---

Class 39: Eligible for the ARS Gold, Silver and Bronze Certificate and Local Trophy

- Cl. 39      **“A Window of Opportunity. . .”**  
    . . . open for experimentation.

All entries will relate to a movie, song, book, poem, symphony, dance, television production or any other cultural entity as a motivation for the arrangement in this challenge class. The choice must relate in some way to the theme of this rose show “Celebrate Glass.” (Examples: Movie – *The Glass Bottom Boat*, or a poem that refers to “. . . the glassy sea”). The name of the movie, poem, book, etc., must accompany the arrangement on a 3” x 5” card; include any extra information that would help the viewer understand the intent of the arrangement. A standard size design of arranger’s choice; type of design must be written on entry tag.



## SECTION P EDUCATIONAL PURPOSE CLASS

---

This section will not be judged. Anyone is welcome to share an arrangement in this open class. Both standard size or miniature size arrangements may be entered. A person may enter one or more arrangements. Judges and/or arrangers will be available during the show to discuss these entries with the participants. Everyone is encouraged to enter this section. An entry tag must accompany each exhibit.

- Cl. 40      **“A Rose Show Bigger Than Life”**  
    Like a magnifying glass. . . enhancing the importance of creating and sharing rose arrangements!

Any type of container may be used – larger for the big roses, and smaller for the miniature roses

---

*We Thank Lew Shupe and Gary Barlow and their entire team for their untiring efforts to coordinate the arrangements portion of the 2008 Buckeye District Fall Convention and Rose Show*

# **MIAMI VALLEY ROSE SOCIETY**

**(EST. 1946)**

**Serving the Dayton and surrounding  
areas for over 60 years.**

**Come join us for our  
63rd annual Rose Show  
on  
Oct. 5th, 2008  
at the  
Wegerzyn Horticultural Center  
in  
Dayton, Ohio**



**Show Chairperson is  
Lisa Crego [lcrego@woh.rr.com](mailto:lcrego@woh.rr.com)**

---

# Horticulture Schedule

Bruce DeLong and James Hering



---

## HORTICULTURAL SHOW RULES

1. The rules and regulations of the American Rose Society for the exhibition of garden roses shall govern this show. The rules are detailed in **Guidelines for Judging Roses**, with current information and corrections published in the AMERICAN ROSE magazine point scoring:

<u>Category</u>	<u>Points</u>
Form	25
Color	20
Stem & Foliage	20
Substance	15
Size	10
Balance & proportion	10

2. Every exhibitor must register and pay the registration fee to the Registration Committee. Any amateur is eligible to exhibit and need not be a member of any rose organization except as noted in special classes

3. All entries, including arrangements, shall be received Saturday, September 13, 2008 from 6:30 a.m. to 11:00 am. Judging will begin at 11:00 a.m. The show will be open to the public as soon as the judging is completed, estimated at 1:00 pm.

4. **All Mentoring classes**, including arrangements, shall be received on Saturday 13, 2008 from 6:30 am to 11:30 am. This will be displayed in a separate room at the front entrance of the Liberty Center.

5. Exhibitors will present their entries to the Placement Committee, and will not be permitted to approach the exhibits until judging is completed. Exceptions: A) All Challenge classes (Class number is appended with "C") may be placed on the exhibition table by the exhibitors under the supervision of the Placement Committee; and B) Arrangers **MUST** place their own arrangements in the designated areas.

6. Only judges, clerks, Rose Show Chairman, Arrangement Chairman, Chairman of Judges, official photographer and tally personnel are permitted within the show area during judging. Exhibitors not following this rule are subject to disqualification from the show. Any exceptions to this rule must be approved by the Rose Show Chairman.

7. Only American Rose Society entry tags shall be used. Both sections must be completed including section, class number, variety, name, address, and exhibitor number... Name labels, name stamps, blue or black ink and pencils are permitted to be used on entry tags.
8. All Roses in specimen classes must be grown by the exhibitor or team of exhibitors in his/her outdoor, private garden. (one garden only except mentoring classes)
9. Containers will be furnished for all classes except for: classes 32, 33, 41, 43, 47 and 59 which must be **provided by the exhibitor**.
10. Wedges of commonly accepted materials may be used, but must not extend above the top of the vase and must be used as inconspicuously as possible. A space must be left to allow watering of the entry because of the length of time of the show.
11. Neither the Lancaster Rose Society, Liberty Center, nor the Buckeye District of the American Rose Society is responsible for the loss of or damage to exhibitor property or prizes or for injury to persons attending the show. Liability of all nature is disclaimed.
12. For specifications governing arrangements, refer to the rules listed in the Arrangement section.
13. All rose varieties exhibited must be entered under the approved exhibition name of the American Rose Society as listed in *Modern Roses XII*, the *American Rose Annual*, the *American Rose Magazine*, *ARS 2008 Official List of Approved Exhibition Names for Exhibitors & Judges* or the *Handbook for Selecting Roses*. Entries listed with an approved exhibition name in the *Combined Rose List* are acceptable. Classification of all roses shall be in accordance with ARS publications to the date of the show.
14. With the exception of challenge classes and classes specifically of multiple varieties, roses in specific specimen classes will be placed alphabetically as space permits and each variety in those classes shall constitute a separate class to be judged separately.
15. ARS Gold, Silver and Bronze Certificates will be awarded to Queen, King and Princess of the Show. ARS Miniature Gold, Silver and Bronze Certificates will be awarded to Miniature Queen, King and Princess of the Show. ARS Mini-Flora Gold, Silver and Bronze Certificates will be awarded to Mini-Flora Queen, King and Princess of Show. ARS Certificates will be awarded in all other classes for which they are available. The ARS Best in Show Certificate will be awarded to the entry chosen from the winners on the Honors Table.
16. Horticulture Division entries in violation of ARS or Show Rules shall be disqualified. Entries shall also be disqualified for the following reasons:

- a. Misnamed, misclassified, misplaced, unlabeled or mislabeled roses;
  - b. Stem-on-stem (except for OGRs and Shrubs);
  - c. Presence of foreign substance applied to the foliage, stem or bloom to improve the appearance of the specimen; and
  - d. Not disbudded if required.
17. Trophies are awarded on Saturday, September 13 at 4:00 p.m. at Liberty Center.
18. All roses in separate containers must each have an entry tag, including challenge classes. Multiple varieties in one container must be named.
19. Each exhibitor or team is entitled to one half (1/2) table space in prep area.
20. All roses become the property of the show committee except Seedling Class 29
21. **Mentoring classes** (Sections F and G) are restricted to teams of two (2) exhibitors, one experienced and one inexperienced, not from the same family garden. Exhibitors may choose their own teams.
22. Under 18 year old participants in the Junior Program are not considered registrants of this event, and therefore no registration fee is required of them.



## SECTION A BUCKEYE DISTRICT PERPETUAL AWARDS

---

*Open to any member of the American Rose Society registered for this convention, and residing in the Buckeye District. A separate entry tag on each container*

- Class 1 C      ARS J. Horace McFarland Memorial Trophy**  
An entry of six (6) different Hybrid Teas, exhibition stage, in separate containers, One bloom per stem, to be placed in an area 24 inches square.
- Class 2 C      Harold H Allen Memorial Trophy**  
Five (5) Hybrid Teas, one bloom per stem, five different cultivars, exhibition stage, in separate containers, to be placed in an area 18 inches square.
- Class 3 C      Buckeye District Past Presidents Trophy**  
Three (3) Hybrid Teas, one bloom per stem, one red, one white, and one blend, exhibition stage, in separate containers.
- Class 4 C      Wilber H. Hruby Consulting Rosarian Trophy**  
Six (6) Hybrid Teas, one bloom per stem, two each of three different cultivars, in separate containers, to be placed in an area 18 inches square.
- Class 5 C      Harry O'Brien Memorial Trophy**  
Five (5) Hybrid Teas, one bloom per stem, from All American Rose Selection, five different cultivars, exhibition stage, separate containers, to be placed in an area 18 inches square.
- Class 6 C      Cecil C. Roach Memorial Trophy**  
Three (3) Floribunda Sprays, same or different cultivars, separate containers.
- Class 7 C      Betty Pavey Buckeye Bowl**  
Four (4) pink or pink blend Hybrid Teas, same or different cultivars, or any combination, exhibition stage, separate containers.
- Class 8 C      Mull-Pott Pot**  
Three (3) white Hybrid Teas, one bloom per stem, same or different cultivars or any combination, exhibition stage, separate containers.
- Class 9 C      The Paul Pencil All American Rose Selections Trophy**  
Three (3) Hybrid Teas, from All American Rose Selections, different cultivars, exhibition stage, separate containers.

- Class 10 C Robert E. Lawton Memorial Trophy**  
Three (3) Hybrid Teas, one bloom per stem. Same cultivar in three stages of bloom, a bud, an exhibition stage and a full blown, separate containers.
- Class 11 C ARS Ralph S. Moore Trophy**  
Seven (7) Miniature roses, one bloom per stem, each a different cultivar, exhibition stage, exhibited in separate water picks placed on a styrofoam block. **Mini-Florals are not eligible.**
- Class 12 C Wenzel Trophy**  
One (1) Hybrid Tea, one (1) Miniature, both at exhibition stage, separate containers, similar or complementary colors.
- Class 13 C Herbert W Bope Memorial Trophy**  
One (1) Hybrid Tea, one bloom per stem, disbudded; One (1) Grandiflora, one bloom per stem, disbudded; One (1) Floribunda Spray, one stem with two or more blooms, separate containers.
- Class 14 C ARS Dr. Griffith J. Buck District Trophy**  
Three (3) Modern Shrubs, a single bloom or spray, different cultivars, separate containers.
- Class 15 C Buckeye District Mini-Flora Challenge**  
Seven (7) mini-floras, one bloom per stem, each a different cultivar, exhibition stage, exhibited in separate water picks placed on a styrofoam block.

#### **Bosley Perpetual Trophy**

Trophy awarded to the Queen of Show, Hybrid Tea or Grandiflora.  
Only winners residing in the Buckeye District will be eligible for this trophy.  
Non-District winning exhibitors will receive a trophy.

#### **Buckeye District Mini Queen Trophy**

Trophy to be awarded to Miniature Queen of Show.  
Only winners residing in the Buckeye District will be eligible for this award.  
Non-District winner exhibitors will receive a trophy.

#### **Buckeye District Mini-Flora Queen Trophy**

Trophy to be awarded to Mini-Flora Queen of Show.  
Only winners residing in the Buckeye District will be eligible for this award.  
Non-District winning exhibitors will receive a trophy.

## SECTION B LARGE FLOWER SPECIMENS

---

Open to all exhibitors registered for this convention.

- Class 16 Hybrid Tea (HT) or Grandiflora (Gr) Specimen**  
One (1) bloom per stem, exhibition stage, without side buds, judged alphabetically within each class. *ARS Certificates for Queen, King and Princess, 2 Court positions chosen from the blue ribbon winners in this class and the Novice class.*
- Class 17 Hybrid Tea (HT) Open Bloom Specimen - ARS Certificate**  
One (1) bloom per stem of a fully open bloom showing stamens.
- Class 18 Single Petal Hybrid Tea (HT) Specimen**  
One (1) stem, one or more blooms, 4-8 petals and/or classed as a single by an ARS publication, stamens showing, side buds permitted.
- Class 19 Hybrid Tea (HT) or Grandiflora (Gr) Spray - ARS Certificate**  
One (1) stem with two or more blooms with or without side buds.
- Class 20 Floribunda (F) Specimen ARS Certificate**  
One (1) bloom per stem without side buds.
- Class 21 Floribunda (F) Spray ARS Certificate**  
One (1) stem with two or more blooms, side buds permitted.
- Class 22 Climber (LCI) ARS Certificate**  
One (1) HGig HWich bloom or multiple blooms per stem, side buds permitted.
- Class 23 Classic Shrub - Classic Shrub ARS Certificate**  
One (1) stem with one or more blooms, with or without side buds.  
*The Classic Shrubs include the following classifications: hybrid kordesii (HKor), hybrid moyesii (HMoy), hybrid musk (HMsk) and hybrid rugosa (HRg).*
- Class 24 Shrubs - Modern Shrub ARS Certificate**  
One (1) stem with one or more blooms, with or without side buds.  
*The Modern Shrub class (S) consists of all shrubs not listed as Classic "S" designated plants in ARS approved references.*
- Class 25 Old Garden Roses (OGR) - Dowager Queen ARS Certificate**  
One (1) stem, bloom or spray. *Old Garden Roses*

*introduced prior to 1867, including roses of unknown dates known to have been in existence prior to 1867 and as designated by “\*\*” in ARS Handbook for Selecting Roses.*

- Class 26 Old Garden Roses - Victorian Award ARS Certificate**  
One (1) stem, naturally grown, bloom or spray. *Varieties introduced in 1867 or after, or with unknown dates of origin. Date of introduction, if known, must be identified on front of entry tag.*
- Class 27 Polyantha (Pol) Spray - ARS Certificate**  
One (1) stem with two or more blooms naturally grown.
- Class 28 Species Roses - Genesis Award ARS Certificate**  
One (1) stem, bloom or spray. Any rose with the designation of (Sp) found in any ARS approved reference.
- Class 29 Seedlings and Sports - ARS Certificate**  
Any bloom or spray not registered or published in ARS approved references. Parentage and type of rose must be stated on the entry tag.
- Class 30 Most Fragrant Rose - ARS Certificate**  
One (1) bloom per stem, any large flowered class.
- Class 31 C Picture Frame**  
One (1) hybrid tea, grandiflora or floribunda rose, exhibition stage, mounted in a provided picture frame, no foliage allowed. One (1) entry per exhibitor, frames available on a first come basis.
- Class 32 C Large Rose in a Bowl ARS Certificate**  
One (1) Hybrid Tea (HT) or one (1) Grandiflora (Gr) bloom, exhibition stage, floating in clear, colorless water, no stem or foliage showing.  
**Exhibitor to provide own clear, colorless container.**
- Class 33 C Hybrid Tea English Box - ARS Certificate**  
Six (6) hybrid teas (HT) of the same or different varieties, exhibition stage, in an English box, no stem or foliage showing **Exhibitors to provide own English box.**
- Class 34 C Cycle of Bloom**  
Three (3) hybrid tea (HT) specimens of one (1) variety, one (1) bud, one (1) exhibition stage and one (1) open bloom, stamens showing, exhibited in separate containers.

SECTION B EDDIE EDWARDS CHALLENGE CLASS

**Class 35 C Eddie Edwards Challenge**

One (1) Hybrid Tea, one bloom per stem, exhibition stage, without side buds from cultivars listed below hybridized by Eddie Edwards. (Not eligible for queen)

**A partial list of Eddie Edwards' introductions can be found below.**

BLAKE HEDRICK	CAJUN PEARL	CAJUN SUNRISE	DEIDRE HALL
DENALI	DESPERADO	HEAR'S GERT	HEAR'S SAM
HEAR'S CHARLIE	IN DREAMS	JOHNNY BECNEL	MARILYN WELLAN
MAVRIK	MOON OVER MIAMI	MU LAN	NEW ORLEANS LADY
POP WARNER	RASPBERRY SWIRLS	REDEMPTION	SLATS
SUSAN BARRY	TABATHA	THE WRIGHT BROTHERS	





Order custom imprinted items online

For a limited time receive a 20% discount off selected items.

~ [www.comprintusa.com](http://www.comprintusa.com) ~

- [Labels & Tags](#)
- [Healthcare Forms](#)
- [Envelopes](#)
- [Promotional Product/Giveaways](#)
- [Business Cards, Letterhead & Envelopes](#)
- [Office Supplies & Equipment](#)

- [Correspondence Cards](#)
- [Forms](#)
- [Retail Products](#)
- [Tax Forms](#)
- [Checks & Banking Supplies](#)

**Shannon  
& Sandy  
Young**

824 North Memorial Drive • Lancaster, OH 43130  
Phone: 740-687-6000 • Fax: 740-687-5878



## SECTION C MINIATURE ROSE SPECIMENS

---

Open to all exhibitors registered for this convention .

- Class 36 Miniature (Min) Specimen**  
One (1) miniature bloom without side buds at exhibition stage.  
*ARS Certificates for Queen, King and Princess, plus 2 Court positions chosen from the blue ribbon winners in this class and the Novice class.*
- Class 37 Miniature (Min) Open Bloom - ARS Certificate**  
One (1) fully open bloom, without side buds, stamens showing.
- Class 38 Miniature (Min) Spray - ARS Certificate**  
One (1) stem with 2 or more blooms.
- Class 39 Single Petal Miniature (Min) - ARS Certificate**  
One (1) single miniature bloom, 4-8 petals and/or classed as a single by an ARS publication, without side buds.
- Class 40 C Picture Frame**  
One (1) miniature (Min) or mini-flora (MinFl) rose, exhibition stage, displayed in a provided picture frame, no foliage permitted. One entry per exhibitor. Frames available on a first come basis.
- Class 41 C Miniature Rose in a Bowl - ARS Certificate**  
One (1) miniature (Min) bloom, exhibition stage, floating in clear, colorless water, no stem or foliage showing. **Exhibitor to provide own clear, colorless container.**
- Class 42 C Miniature Cycle of Bloom**  
Three (3) miniature (Min) specimens of one (1) variety, one (1) bud, one (1) exhibition stage and one (1) open bloom with stamens showing, exhibited in separate water picks placed on a styrofoam block.
- Class 43 C Miniature or Mini-Flora English Box - ARS Certificate**  
Six (6) miniature (Min) or six (6) mini-flora (MinFl) blooms, same or different varieties, exhibition stage, displayed in an English box - **Exhibitors to provide own English box.**

## SECTION D MINI-FLORA ROSE SPECIMENS

---

Open to all exhibitors registered for this convention.

- Class 44 Mini-Flora (MinFl) Specimens**  
One (1) mini-flora bloom, without side buds at exhibition stage. *ARS Certificates for Queen, King and Princess plus 2 Court positions chosen from the blue ribbon winners in this class and the Novice class.*
- Class 45 Mini-Flora (MinFl) Open Bloom**  
One (1) fully open bloom, without side buds, stamens showing.
- Class 46 Mini-Flora (MinFl) Spray - ARS Certificate**  
One (1) stem with 2 or more blooms.
- Class 47 C Mini-Flora (MinFl) Rose in a Bowl - ARS Certificate**  
One (1) mini-flora (MinFl) bloom, exhibition stage, floating in clear, colorless water, no stem or foliage showing. **Exhibitor to provide own clear, colorless container.**
- Class 48 C Mini-Flora Cycle of Bloom**  
Three (3) mini-flora (MinFl) specimens of one (1) variety, one (1) bud, one (1) exhibition stage and one (1) open bloom with stamens showing, exhibited in water picks placed on a styrofoam block.

## SECTION E NOVICE CLASS

---

The Novice Class is open to anyone who has never won a trophy in an ARS National or District Rose show. ARS Certificates will be awarded to winners.

The same varieties cannot be entered in Classes 16, 36 and 44.

- Class 49 Hybrid Tea (HT) or Grandiflora (Gr) Specimens**  
One (1) stem, exhibition stage, disbudded. Eligible for Queen.
- Class 50 Miniature (Min) Specimens**  
One (1) Stem, exhibition stage, disbudded. Eligible for Queen.
- Class 51 Mini-Flora (MinFl) Specimens**  
One (1) stem, exhibition stage, disbudded. Eligible for Queen.

## SECTION F MENTORING LARGE ROSE CHALLENGE CLASSES

Must be entered by a team of two exhibitors, not from the same family garden, one experienced and one inexperienced, with both names on the entry tag. Roses used may all be from the novice's garden or from both gardens, but not all from the experienced exhibitor's garden. Only one entry per team per class.

### **Class 52 C Hi-Lo**

One (1) hybrid tea (HT) and one (1) miniature (Min) or mini-flora (MinFl) bloom at exhibition stage, similar or complementary in color and form, exhibited in separate containers. Miniature or mini-flora rose inserted in water pick placed in a vase.

### **Class 53 C Class of Two**

Two (2) hybrid tea (HT) or (2) Grandiflora (Gr) blooms at exhibition stage, without side buds, same or different cultivars, complementary in color and form, exhibited in separate containers.

### **Class 54 C Cycle of Bloom**

Three (3) hybrid tea (HT) specimens of one (1) variety, one (1) bud, one (1) exhibition stage and one (1) open bloom, stamens showing, exhibited in separate containers.

### **Class 55 C Artist's Palette**

Five (5) roses, different varieties, same rose classification (eg. all HT, all Fl, or all GR, etc.), similar stage, displayed in an artist's palette, no foliage allowed. Palettes available on a first come basis or exhibitors may use their own palettes.



*Mary's Plant Farm*  
(513) 894-0022

Specializing in rugosa, olde, & shrub roses, and we have #1 grade field grown stock.

We have a large selection of Griffith Buck roses, Canadian Explorer Series, Romantica Series and antique varieties. Find the usual and unusual in plants, from wildflowers, herbs, perennials, hemerocallis, shrubs, trees, hosta and conifers.

Many plant collections on display throughout the 3 acres of gardens, which change every few weeks with a new burst of color. Mail Order. Complete catalog at: [www.marysplantfarm.com](http://www.marysplantfarm.com)

Spring Hours (April-June)	Tuesday - Saturday	9:30 am	6:30 pm
Always closed Mondays	Sunday	12:00 pm	5:00 pm
Summer Hours (July-Oct)	Tuesday - Saturday	9:30 am	5:00 pm

**2410 Lanes Mill Rd Hamilton, OH 45013**

## SECTION G MENTORING SMALL ROSE CHALLENGE CLASSES

---

Must be entered by a team of two exhibitors, not from the same family garden, one experienced and one inexperienced, with both names on the entry tag. Roses used may all be from the novice's garden or from both gardens, but not all from the experienced exhibitor's garden. Only one entry per team per class.

**Class 56 C Class of Two**

Two (2) miniature (Min) roses or two (2) mini-flora (MinFl) roses at exhibition stage, without side buds, same or different cultivars, complementary in color and form, exhibited in water picks placed on a styrofoam block.

**Class 57 C Cycle of Bloom**

Three (3) miniature (Min) or mini-flora (MinFl) specimens of one (1) variety, one (1) bud, one (1) exhibition stage and one (1) open bloom, stamens showing, exhibited in water picks placed on a styrofoam block.

**Class 58 C Artist's Palette**

Five (5) roses, different varieties, same rose classification, (eg. all Mini, all MinFl), similar stage, displayed in an artist's palette, no foliage allowed. Palettes available on a first come basis or exhibitors may use their own palettes.

**WE APPRECIATE OUR DONORS**

**STANDING STONE BANK - LANCASTER, OH  
FASHION VANITY CLEANERS - LANCASTER, OH**

*Thanks to our Horticulture Judges*

Joe Enders – Jenison, Michigan  
George Hartley – Royal Oak, Michigan  
Ildiko Marcus – Xenia, Ohio  
Peter Schneider – Mantua, Ohio  
Susan Schneider – Mantua, Ohio  
Jeff Sommer – Cleveland, Ohio  
Bill Zumbar – Alliance, Ohio

## SECTION H THE BRAGGIN' RIGHTS TROPHY

---

One entry per Buckeye District Rose Society. Society team must consist of at least two (2) members registered for this convention and no more than four (4) specimens may be from any one member's garden.

### **Class 59 C Inter-club Challenge**

Seven (7) specimens, one bloom per stem, different varieties, all from the same class (eg. HT, Gr, Min, MinFl), oasis not allowed. **Exhibitors to provide own clear, colorless container.**

## SECTION I JUDGES CLASSES

---

*Open only to the judges of this show. Judges certificate for best entry in each class. Trophy awarded to best of all classes. Each judge may enter up to three specimens in each class.*

**Class 60** One (1) hybrid tea (HT) or grandiflora (Gr) specimen, one bloom per stem, exhibition stage.

**Class 61** One (1) floribunda (F) spray.

**Class 62** One (1) miniature (Min) or mini-flora (MinFl) specimen, one bloom per stem, exhibition stage.

**Class 63** One (1) modern shrub (S) spray.



A dedicated supporter of  
**The Lancaster Rose Club**  
and their effort to help our customers "Learn 2 Grow"



▶ Enter [Learn2Grow.com](http://Learn2Grow.com)



**North Memorial Dr Lancaster, OH 43130**

## SECTION J LANCASTER ROSE CLUB (RESTRICTED CLASSES)

---

Entries are restricted to members of the Lancaster Rose Club

**Class 64 President's Class**

One (1) bloom per stem, exhibition stage, without side buds. Current or any other previously named club hybrid tea rose. One entry per club member.

**Class 65 Vice President's Class**

One (1) bloom per stem, exhibition stage, without side buds. Current or any other previously named club Miniature or Mini-Flora rose. One entry per club member

### BEST OF SHOW

---

**All entries are eligible to be judged for this trophy.**

**ARS Certificate**

**and**

**The Rose Bowl Trophy Award**

---

*We Thank Bruce DeLong, Dr. Jim Hering, Jim Zimmerman and others for their efforts to create the Horticulture Schedule for the 2008 Buckeye District Fall Convention and Rose Show*

**(740) 654-7711**



**A Healthy Smile is like a  
Good Rose Garden.**

Both require disease prevention, proper feeding  
and regular check-ups.

**Dr. Craig M. Gentile DDS**

1334 Sheridan Drive Lancaster, Oh 43130

*Get the account that  
pays you when you use it!*

## Ultimate Checking

- NO maintenance fees
- FREE online banking and bill pay
- Courtesy Overdraft Protection
- Built in savings programs for hearing, vision and pharmacy needs

12 Full Service Locations  
Open Evenings and Weekends



FairfieldNationalBank.com

Member FDIC

OUR SINCERE THANKS TO  
THOSE WHO MADE THIS  
EVENT POSSIBLE

THE FAIRFIELD COUNTY  
COMMISSIONERS AND  
THE STAFF OF THE  
LIBERTY CENTER

GREG EYERMAN &  
KATHY LEVECK  
AT THE FAIRFIELD  
COUNTY VISITORS AND  
CONVENTION BUREAU

THE LANCASTER GLASS  
MUSEUM

THE LANCASTER  
HISTORICAL SOCIETY

ARS JUDGES - WHO  
DONATED THEIR TIME,  
EXPERTISE AND  
EXPENSES TO BE HERE



A Very Special Thanks to Leonard Boggs who embroidered all the gift bags given to convention registrants. His is a special gift that will help us remember the 2008 "Buckeye District" for years to come. Thanks to Leonard and to the Westerville Sew-N-Save, Westerville, OH



# Rhoads Farm Market

1051 State Route 56 East  
Circleville, OH 43113

800-378-8934

**50 Years of Service  
to Central Ohio**

110 acres of premium shade,  
flowering, & evergreen trees.

### Order Gift Cards



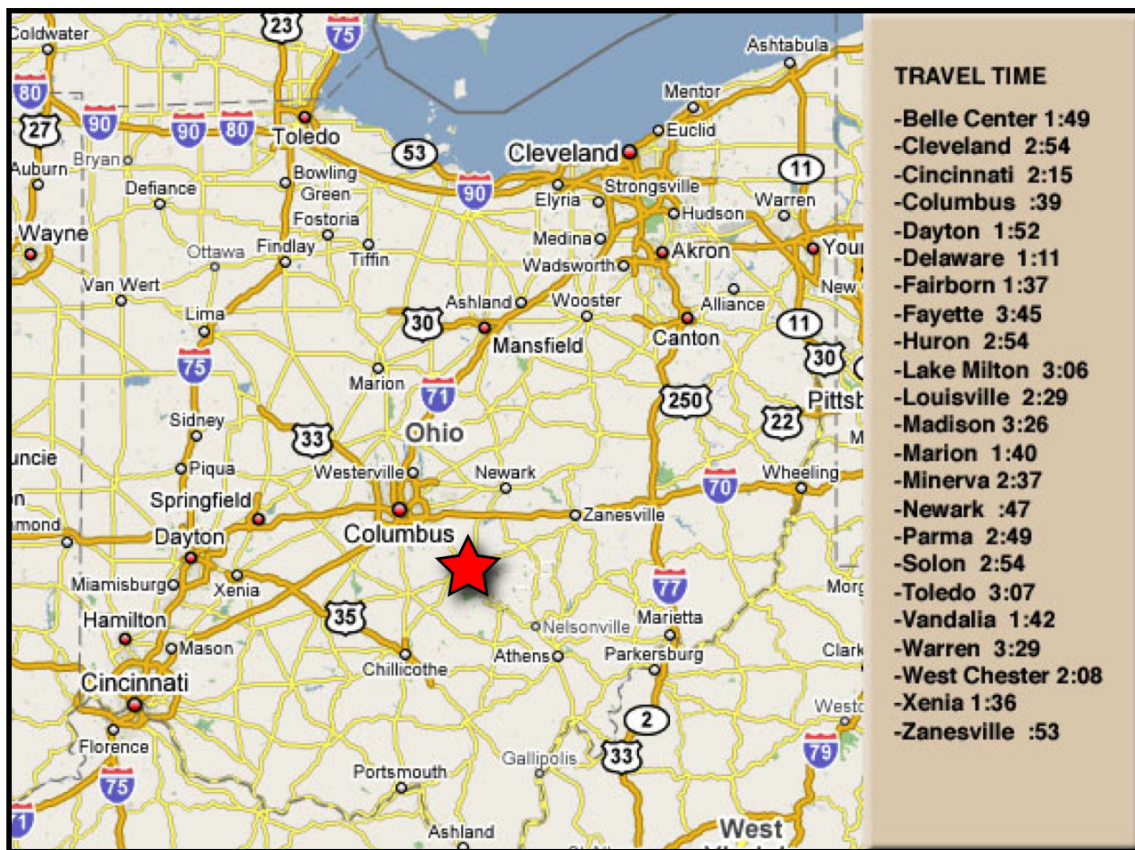
[www.rhoadsfarmmarket.com](http://www.rhoadsfarmmarket.com)

# Maps And Contacts

Maps showing venues with normal driving times



## TRAVEL TIMES FROM VARIOUS OHIO CITIES



## 2008 ARS Buckeye District Fall Convention and Rose Show MAPS & DRIVING DIRECTIONS

Travel Time to Lancaster, Ohio from Buckeye Chapters

## CONTACTS

---

### Event Contact Persons

Van Shuttle Service	(On call number)	740-215-6348
Steve Campbell	Event Coordinator	614-562-7979
Dave Ackers	Show Chairman (H)	740-974-7107
Gary Barlow	Show Chairman (A)	937-478-2510
Sue Heffner	Registration	740-539-7345
Lynn Campbell	Event AA	740-215-6348
Susie Ackers	Trophies	740-974-5324
Len Pavuk	Event Treasurer	614-619-4710
Jim Zimmerman	District Director	937-672-5274

### Addresses

Liberty Center	955 Liberty Dr	Elks Ballroom	129 E. Main St
Ohio Glass Museum	124 W. Main St	Dave Ackers	383 Knollwood Ct
Steve Campbell	1221 Granville Pike	Tim Hartranft	1461 E. Mulberry St

Website <http://www.LancasterRoseClub.org>



**Dill's Greenhouse** 25<sup>th</sup> Anniversary  
Thanks for your patronage.

**Preferred Gardener Club**  
Enjoy the Benefits...

**Dill's Greenhouse**  
*Only Nature Does It Better*

South of Columbus  
Take I-270 (south loop)  
Exit at Route 33 Lancaster  
Go 4 miles and Turn Right  
Phone: 614-836-3700  
Fax: 614-836-1605  
[Info@dillsgreenhouse.net](mailto:Info@dillsgreenhouse.net)

**Dill's Greenhouse**  
*Only Nature Does It Better*

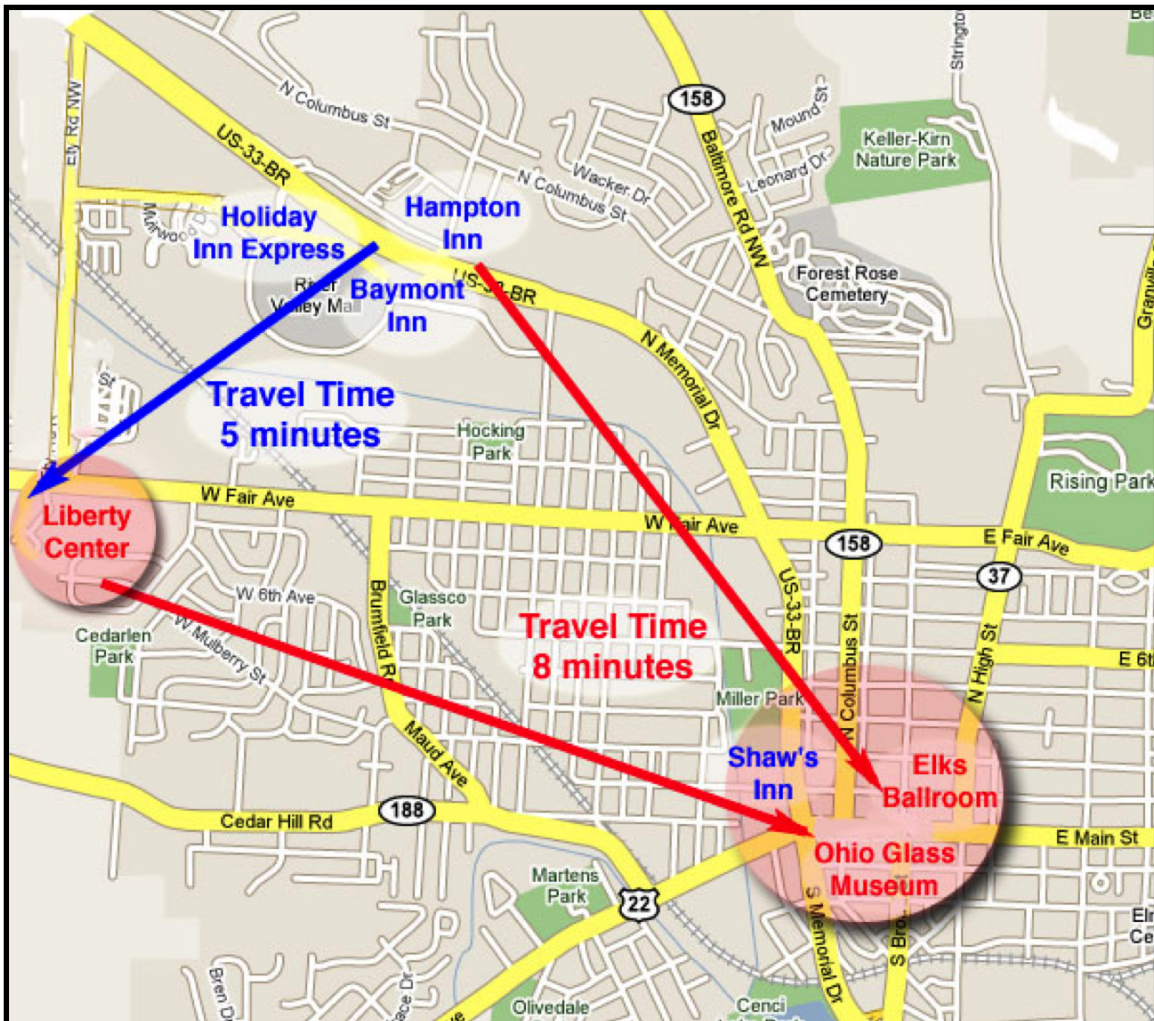
## LIBERTY CENTER <-> DOWNTOWN <-> HOTELS

Participating Hotel nightly rates as of 08/10/2008

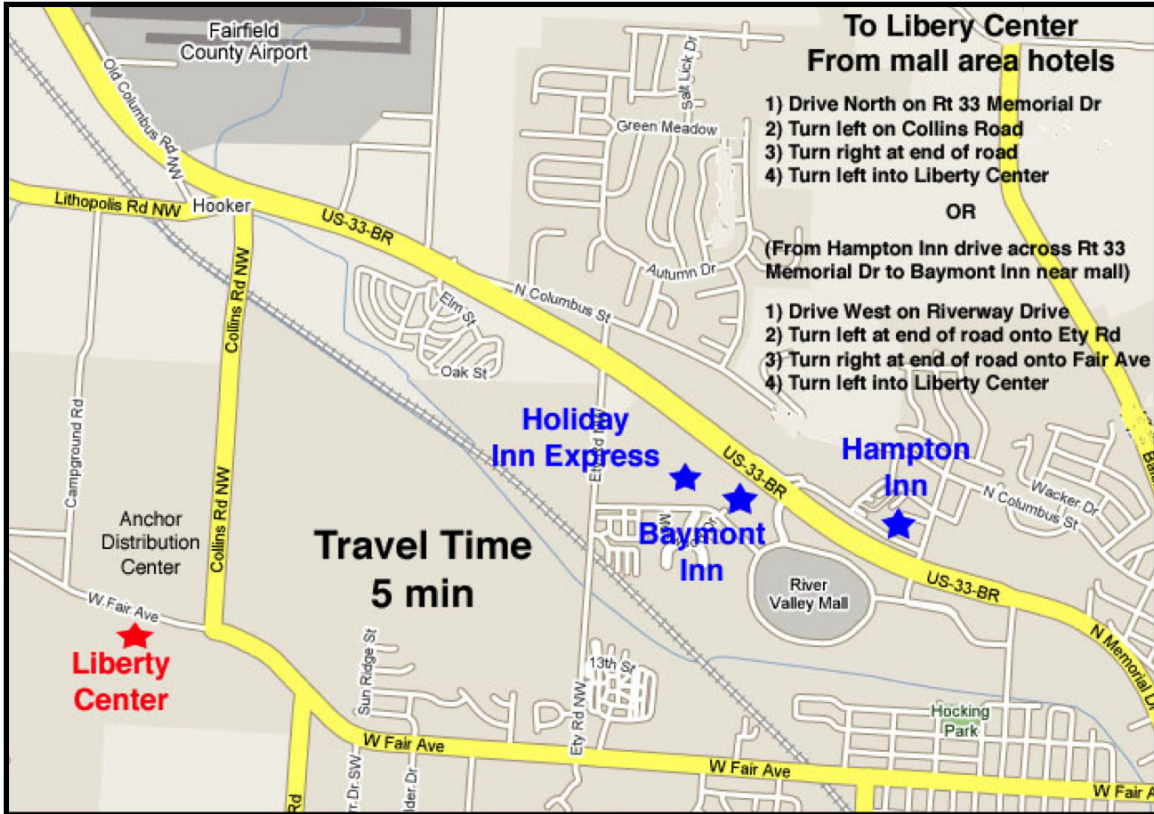
Shaw's Inn	\$120-\$200	-	(double)	740-654-1842
Baymont Inn	\$79+T	-	(double)	740-654-5111
Hampton Inn	\$92+T	-	(king or double)	740-654-2999
Holiday Inn Express	\$110+T	-	(double or queen)	740-654-4445

(Please make reservations by August 1st - You must ask for Buckeye District Rose Event)  
Other hotels including Knights Inn and Lancaster Inn may have lower room rates

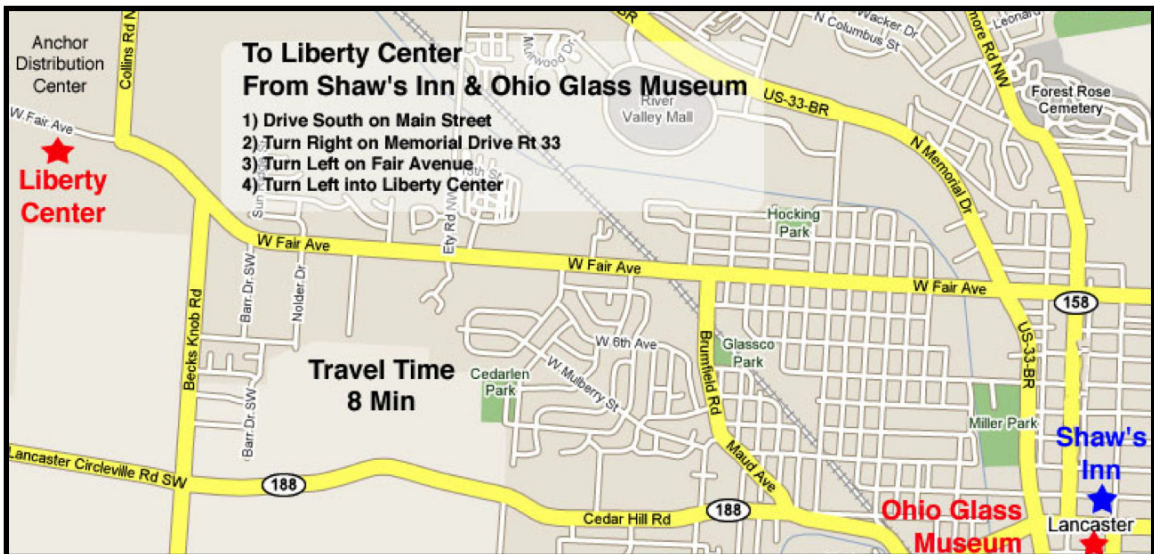
Shaw's Inn	123 N. Broad St	Baymont Inn	1721 River Valley Cir N
Holiday Inn Exp	1861 Riverway Dr	Hampton Inn	2041 Schorway Dr



## LIBERTY CENTER <-> HOTELS



## LIBERTY CENTER <-> MUSEUM AND ELKS



# OHIO GLASS MUSEUM <-> HOME GARDENS



BRUCE FRASER, DDS., M.S.    GREGORY MICHAELS, DDS., M.S.

**NE**  
*Northeast*  
**MS**

ORAL and MAXILLOFACIAL SURGERY

Meet Us | Patient Info | Procedures | Online Forms | Referring Doctors | Office Maps | Video

(740) 654-6628

Gahanna    Lancaster

Bruce Fraser D.D.S., M.S.    Gregory Michaels D.D.S., M.S.

823 North Columbus Street    Lancaster, OH 43130

---

# Shuttle Van Schedule

“On Call” Van Telephone Number 740-215-6348

---

Friday Evening: Shuttle Vans “On Call” 6:15PM - 11:00PM

Saturday Morning: Shuttle Vans “On Call” 7:00AM - 10:00AM

Saturday Learning Sessions: 11:00AM - 4:00PM

Shuttle Vans will supply transportation for both morning and afternoon learning sessions. (During the morning learning session you will be kept informed of the judging results as they become available.) Shuttle Vans will drive a loop route stopping at each location every 15 minutes during the day. **Come and go at your pleasure.** The schedule accommodates exhibitors who wish to return to the Liberty Center between 1:00PM and 1:30PM.

Saturday Show Close: 4:00PM - 5:00PM

Vans will loop from Liberty Center to hotels

Saturday Banquet: 6:15PM - 7:00PM & 9:30PM - 10:00PM

Vans will loop from Elks Ballroom to hotels.

Saturday Late Night: Shuttle Vans - “On Call” 10:30PM - 12:30AM

Sunday Morning: Shuttle Vans - “On Call” 7:45AM - 11:00AM

(Garden Tour Map on previous page)



Like a good neighbor, State Farm is there.®

# Joni Campbell

Insurance

Mutual Funds

State Farm Bank®

## (740) 687-1961

1043 E 6th Avenue Lancaster, OH 43130





Raffle Products, "Gift Bag" contents and other considerations  
courtesy of the following companies (random order)



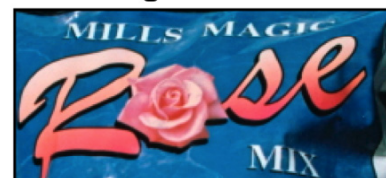
[www.rockyboots.com](http://www.rockyboots.com)

# 3 Ways to Kill Japanese Beetles

*The middle boot comes with instructions*



Beaty Fertilizer



Raffle Products and "Gift Bag" contents courtesy of the following companies (random order)



# MasterGardening.com

your premier garden supplier! 888-422-3337



Shop By Category

- Bestsellers
- Earth-Friendly
- Apparel
- Gift Guide
- Composting
- Kitchen Ideas
- Greenhouse Kits
- Potting
- Arbors - Trellises
- Garden Design
- Pest Control
- Dog & Cat Fence
- Birding
- Outdoor Living
- Plant Health
- Pots - Planters
- Water Gardens
- Garden Tools
- Seeds
- Cold Frames
- Grow Racks
- Watering
- Lawn Tools

**DAVID AUSTIN® ROSES**  
BREEDERS OF THE ENGLISH ROSES. SPECIALIST GROWERS OF OLD, SIBIRIAN, SPECIES, CLIMBING AND MODERN ROSES



**The  
Liquid  
Fence  
Company**

**PICKERING NURSERIES**  
 PORT HOPE, ONTARIO



**THE Scotts Miracle-Gro COMPANY**



# ANCHOR HOCKING CONGRATULATES THE BUCKEYE DISTRICT ARS

*Anchor Hocking is proud to be a part of this Buckeye District American Rose Society Convention. We welcome all of you to Lancaster, home of Anchor Hocking Glass Company since 1905. Best of luck for a successful convention!*



As befits a company with our heritage, we have continued to produce quality glassware throughout the decades. We manufacture a majority of our products in Lancaster, Ohio, a town of some 35,000 people located 33 miles south-east of Columbus. In fact, our current factory sits on the site of our very first one.

We are as emphatic about the quality of our products today as we have always been – proud of the design and of the value they represent for consumers, foodservice and the commercial sector. That's why you will find them in kitchens, baths and living rooms of most every American home.

